

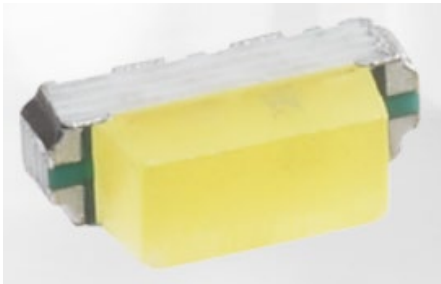


**Industrial/Illumination  
Status Indicators  
SideView Dual Color Chip Led  
Catalog**



## SideView Dual Color Chip LED 0804 Series

- Meet RoHS.
- Package In 8mm Tape On 7" diameter Reels.
- Compatible With Automatic Placement Equipment.
- Compatible With Infrared Reflow Solder Process.
- I.C. Compatible. / EIA STD Package.

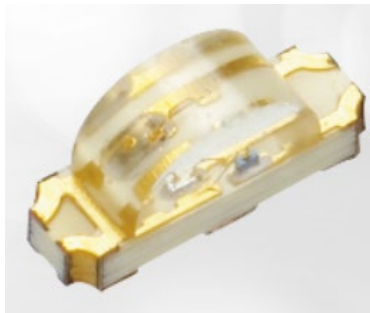


| Specifications     |                                |              |                                 |   |
|--------------------|--------------------------------|--------------|---------------------------------|---|
|                    |                                |              |                                 | <span style="color: red;">N</span> New Product <span style="color: green;">U</span> Under Development |
| Part No            | Outside Dimension              | Color        | Dominant Wavelength             | Luminous Intensity  |
| LTST-S115KETBKT    | 3.20(L) x 1.50(W) x 1.00(H) mm | Blue/Red     | TYP.O:605;G:571@5mA             | O:11.2~71.0;G:4.5~28.0 @5mA   |
| LTST-S115KFKGKT-5A | 3.20(L) x 1.50(W) x 1.00(H) mm | Green/Orange | TYP.O:605;G:571@5mA             | O:11.2~71.0;G:4.5~28.0 @5mA   |
| LTST-S115KGJRKT    | 3.20(L) x 1.50(W) x 1.00(H) mm | Green/Red    | 571/631                         | TYP.G:35.0,R:65.0 @20mA   |
| LTST-S115KGKFKT-5A | 3.20(L) x 1.50(W) x 1.00(H) mm | Green/Orange | G:567.5~576.5;O:600.5~612.5@5mA | G:9.0~22.4;O:11.2~28.0@5mA  |
| LTST-S115KRKGKT    | 3.20(L) x 1.50(W) x 1.00(H) mm | Green/Red    | G:571;R:631 @ 20mA              | G:28~112;R:45~180 @ 20mA  |
| LTST-S115KSKRKT    | 3.20(L) x 1.50(W) x 1.00(H) mm | Red/Yellow   | 571/631                         | TYP.G:35.0,R:65.0 @20mA   |
| LTST-S115TGKFKT    | 3.20(L) x 1.50(W) x 1.00(H) mm | Green/Orange | G:525;F:605 @ 20mA              | G:71~450;F:28~280 @ 20mA  |

See more specifications about 0804 Series  
[Here](#)

## SideView Dual Color Chip LED 1206 Series

- Meet RoHS, Green Product.
- Package In 8mm Tape On 7" diameter Reels.
- Compatible With Automatic Placement Equipment.
- Compatible With Infrared Reflow Solder Process.
- I.C. Compatible. / EIA STD Package.



| Specifications  |                                |              |   |   |
|-----------------|--------------------------------|--------------|---|---|
| Part No         | Outside Dimension              | Color        | Dominant Wavelength                                       | Luminous Intensity  |
| LTW-327ZDSKG-5A | 3.00(L) x 2.00(W) x 1.00(H) mm |              | Chromaticity Coordinates<br>TYP.x:0.3000.y:0.3000<br>@5mA | 28.0~112.0 mcd<br>@5mA(white);4.5~18.0 mcd<br>@5mA(Green) |
| LTW-S115KSDS-5A | 3.20(L) x 1.50(W) x 1.00(H) mm | White/Orange | TYP.Yellow: 589 nm@5mA                                    | White:45.0~112.0,Yellow:11.2~71<br>@5mA                   |
| LTW-S225DSKS-PH | 2.10(L) x 1.00(W) x 0.60(H) mm | White        | White:0.31 & 0.31 /<br>Yellow:584-596                     | White:112-450 / Yellow:45-180                             |

N New Product U Under Development

See more specifications about 1206 Series  
[Here](#)

## SideView Dual Color Chip LED 1208 Series

- Meet RoHS.
- Package In 8mm Tape On 7" diameter Reels.
- Compatible With Automatic Placement Equipment.
- Compatible With Infrared Reflow Solder Process.
- I.C. Compatible. / EIA STD Package.



| Specifications  |                                |              |  |                                    |
|---|--------------------------------|--------------|--|------------------------------------|
| <span style="color: red;">N</span> New Product <span style="color: green;">U</span> Under Development |                                |              |  |                                    |
| Part No   | Outside Dimension              | Color        | Dominant Wavelength                      | Luminous Intensity                 |
| LTST-S225KFKGKT-5A  | 2.10(L) x 1.00(W) x 0.60(H) mm | Green/Yellow | Orange:typ 605 /<br>Green:typ 571        | Orange:18-45 / Green:7.1-18        |
| LTST-S225KGKSKT-NU  | 2.10(L) x 1.00(W) x 0.60(H) mm | Green/Yellow | Green:567.5-576.5/Yellow:<br>585.5-591.5 | Green:22.5-57/Yellow:45-112        |
| LTST-S225KRTGKT-Q   | 2.10(L) x 1.00(W) x 0.60(H) mm | Green/Red    | Red:617-633 nm /<br>Green:520-535 nm     | Red:11.2-28 mcd / Green:56-140 mcd |
| LTST-S326KFKGKT   | 3.00(L) x 2.00(W) x 1.00(H) mm | Green/Orange | G:567.5~576.5nm;O:598~<br>612nm@20mA     | G:18~112mcd;O:71~280mcd@20mA       |
| LTST-S326KGJRKT   | 3.00(L) x 2.00(W) x 1.00(H) mm | Green/Red    | G:571;R:631 @ 20mA                       | G:18~112;R:18~112 @ 20mA           |
| LTST-S326KGJSKT   | 3.00(L) x 2.00(W) x 1.00(H) mm | Green/Yellow | 571/631                                  | TYP.G:35.0,Y:75.0 @20mA            |
| LTST-S326KGKFKT   | 3.00(L) x 2.00(W) x 1.00(H) mm | Green/Orange | G:571;F:605 @ 20mA                       | G:18~112;F:28~180 @ 20mA           |
| LTST-S326KSTGKT-5A  | 3.00(L) x 2.00(W) x 1.00(H) mm | Green/Yellow | 528/588 @5mA                             | G:28.0~280.0,Y:7.1~71.0@ 5mA       |

See more specifications about 1208 Series  
[Here](#)