



**Industrial/Illumination  
Status Indicators  
High Power Led  
Catalog**



## PLCC LED 5050 Series

- High power LED light source
- Instant light (less than 100 ns)
- Low voltage DC operated
- Low thermal resistance
- RoHS Compliant
- Lead free reflow s



Specifications					
<span>N</span> New Product <span>U</span> Under Development					
Part No.	Package	Outside Dimension	Emitting Color	If (mA)	Vf (V)
LTPL-P00DMS30	5050	5.4x5.0x1.2	White	150	3.27
LTPL-P00DNS40	5050	5.4x5.0x1.2	White	150	3.27
LTPL-P00DWS57	5050	5.4x5.0x1.2	White	150	3.27
LTPL-P00DWS65	5050	5.4x5.0x1.2	White	150	3.27
LTPL-P033AS30-LTK	5050	7.4x5.0x1.3	White	180	5.7
LTPL-P033AS50-LTK	5050	7.4x5.0x1.3	White	180	5.7
LTPL-P033RGB	5050	7.4x5.0x1.3	RGB in 1		

See more specifications about 5050 Series  
[Here](#)

## PLCC LED 5630 Series

- Package in 12mm tape on 7" diameter reels.
- Compatible with automatic placement equipment.
- Compatible with infrared and vapor phase reflow solder process.
- EIA STD package.
- I.C. compatible.

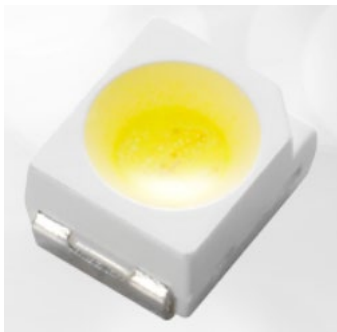


Specifications					
<span style="color: red;">N</span> New Product <span style="color: green;">U</span> Under Development					
Part No.	Package	Outside Dimension	Emitting Color	If (mA)	Vf (V)
LTW-5630AZL27-EUH	5630	5.6x3.0x0.77	White	65	2.8
LTW-5630AZL30-EUH	5630	5.6x3.0x0.77	White	65	2.8
LTW-5630AZL40-EUH	5630	5.6x3.0x0.77	White	65	2.8
LTW-5630AZL57-EUH	5630	5.6x3.0x0.77	White	65	2.8
LTW-5630AZL65-EUH	5630	5.6x3.0x0.77	White	65	2.8
LTW-5630SD470	5630	5.6x3.0x0.77	Blue	150	3.0
LTW-5630SD530	5630	5.6x3.0x0.77	Green	150	3.2
LTW-5630SP660	5630	5.6x3.0x0.77	Red	150	2.2
LTW-5630SP750	5630	5.6x3.0x0.77	Red	150	2.0

See more specifications about 5630 Series  
[Here](#)

## PLCC LED 3528 Series

- Package in 12mm tape on 7" diameter reels
- Compatible with automatic placement equipment.
- Compatible with infrared and vapor phase reflow solder process.
- EIA STD package.
- I.C. compatible.



Specifications					
Part No.	Package	Outside Dimension	Emitting Color	If (mA)	Vf (V)
LTW-E670DS-TH1	3528	3.5x2.8x1.95	White	50	3.1

N New Product U Under Development

See more specifications about 3528 Series  
[Here](#)

## PLCC LED 3532 Series

- Package in 12mm tape on 7" diameter reels
- Compatible with automatic placement equipment.
- Compatible with infrared and vapor phase reflow solder process.
- EIA STD package.
- I.C. compatible.



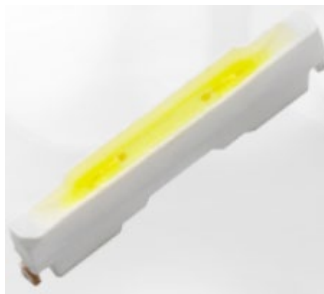
Specifications					
Part No.	Package	Outside Dimension	Emitting Color	If (mA)	Vf (V)
LTW-Q35ZRGB	3532	3.5x3.2x0.65	RGB in 1		

N New Product U Under Development

See more specifications about 3532 Series  
[Here](#)

## PLCC LED 3003 Series

- Package in 8mm tape on 7" diameter reels.
- Compatible with automatic placement equipment.
- Compatible with infrared and vapor phase reflow solder process.
- EIA STD package.
- I.C. compatible.



Specifications					
Part No.	Package	Outside Dimension	Emitting Color	If (mA)	Vf (V)
LTW-303DCG-KB	3003	3.0x0.3x0.85	White	20	3

N New Product U Under Development

See more specifications about 3003 Series  
[Here](#)

## PLCC LED 4508 Series

- Package in 12mm tape on 7" diameter reels
- Compatible with automatic placement equipment.
- Compatible with infrared and vapor phase reflow solder process.
- EIA STD package.
- I.C. compatible.



Specifications					
Part No.	Package	Outside Dimension	Emitting Color	If (mA)	Vf (V)
LTW-008RGB2-PH1	4508	4.5x0.85x1.25	RGB in 1		

N New Product U Under Development

See more specifications about 4508 Series  
[Here](#)

## PLCC LED 3014 Series

- Package in 8mm tape on 7" diameter reels.
- Compatible with automatic placement equipment.
- Compatible with infrared and vapor phase reflow solder process.
- EIA STD package.
- I.C. compatible.



Specifications					
Part No.	Package	Outside Dimension	Emitting Color	If (mA)	Vf (V)
LTW-K140SXR85	3014	3.0x1.4x0.8	White	60	3.2
LTW-K140SZR27	3014	3.0x1.4x0.8	White	60	3.2
LTW-K140SZR27-EU	3014	3.0x1.4x0.8	White	60	3.2
LTW-K140SZR30	3014	3.0x1.4x0.8	White	60	3.2
LTW-K140SZR30-EU	3014	3.0x1.4x0.8	White	60	3.2
LTW-K140SZR40	3014	3.0x1.4x0.8	White	60	3.2
LTW-K140SZR40-EU	3014	3.0x1.4x0.8	White	60	3.2
LTW-K140SZR50	3014	3.0x1.4x0.8	White	60	3.2
LTW-K140SZR50-EU	3014	3.0x1.4x0.8	White	60	3.2
LTW-K140SZR57	3014	3.0x1.4x0.8	White	60	3.2
LTW-K140SZR57-EU	3014	3.0x1.4x0.8	White	60	3.2
LTW-K140SZR65	3014	3.0x1.4x0.8	White	60	3.2
LTW-K140SZR65-EU	3014	3.0x1.4x0.8	White	60	3.2
LTW-M140ZVS	3014	3.0x1.4x1.2	White	20	3.1

See more specifications about 3014 Series  
[Here](#)



## PLCC LED 3804 Series

- Package in 12mm tape on 7" diameter reels
- Compatible with automatic placement equipment.
- Compatible with infrared and vapor phase reflow solder process.
- EIA STD package.
- I.C. compatible.



Specifications					
Part No.	Package	Outside Dimension	Emitting Color	If (mA)	Vf (V)
LTW-010DCG	3804	3.8x0.4x0.9	White	20	3.1
LTW-010DCG-TR	3804	3.8x0.4x0.9	White	20	3

N New Product U Under Development

See more specifications about 3804 Series  
[Here](#)

## PLCC LED 3020 Series

- Package in 8mm tape on 7" diameter reels.
- Compatible with automatic placement equipment.
- Compatible with infrared and vapor phase reflow solder process.
- EIA STD package.
- I.C. compatible.



Specifications					
Part No.	Package	Outside Dimension	Emitting Color	If (mA)	Vf (V)
LTW-M670ZVS-M5	3020	3.0x2.0x1.3	White	20	3.1

N New Product U Under Development

See more specifications about 3020 Series  
[Here](#)

## PLCC LED 3806 Series

- Package in 12mm tape on 7" diameter reels
- Compatible with automatic placement equipment.
- Compatible with infrared and vapor phase reflow solder process.
- EIA STD package.
- I.C. compatible.



Specifications					
Part No.	Package	Outside Dimension	Emitting Color	If (mA)	Vf (V)
LTW-006DCG-E2	3806	3.8x0.6x1.2	White	20	3.1
LTW-020ZDCG	3806	3.8x0.6x1.2	White	20	3.1
LTW-206DCG-TM	3806	3.8x0.6x1.0	White	20	3.1
LTW-206DCG-TMS	3806	3.8x0.6x1.0	White	20	2.95

N New Product U Under Development

See more specifications about 3806 Series  
[Here](#)

## PLCC LED 2808 Series

- Package in 12mm tape on 7" diameter reels
- Compatible with automatic placement equipment.
- Compatible with infrared and vapor phase reflow solder process.
- EIA STD package.
- I.C. compatible.



Specifications					
Part No.	Package	Outside Dimension	Emitting Color	If (mA)	Vf (V)
LTW-008ZDCG	2808	2.8x0.8x1.2	White	20	3.1
LTW-108SEG-W	2808	2.8x0.8x1.2	White	20	3.1

N New Product U Under Development

See more specifications about 2808 Series  
[Here](#)